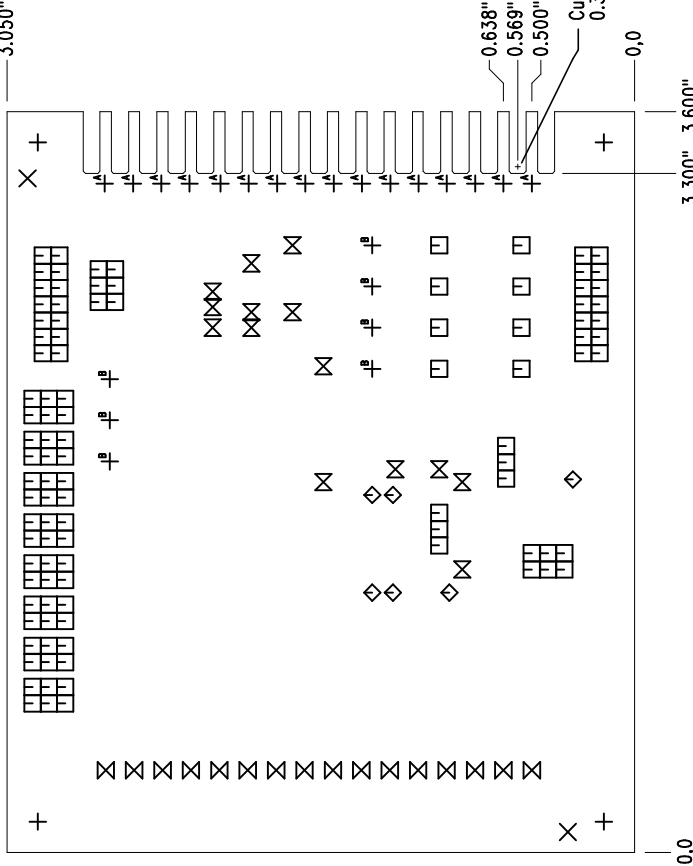


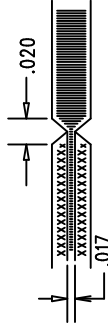
LINEAR TECHNOLOGY DATE: 1-7-10
DC1469B - LTC6801IG 12-CELL BATTERY STACK MONITOR



SIZE	QTY	SYM	PLATED	TOL
0.015	6	◇	YES	+/-0.003
0.02	14	⊠	YES	+/-0.003
0.035	102	□	YES	+/-0.003
0.04	16	⊕	YES	+/-0.003
0.057	16	⊗	YES	+/-0.003
0.065	7	⊕	YES	+/-0.003
0.07	2	⊗	NO	+/-0.003
0.187	4	⊕	NO	+/-0.003

chamfered edge finger both sides = 0.0118" x 45°

LAYER STRUCTURE



NOTES: UNLESS OTHERWISE SPECIFIED

- FAB PER IPC-A-600.
- MATERIAL: -EPOXY FIBERGLASS, NEMA GRADE FR-4
-FINISHED THICKNESS TO BE 0.062" +/- .005"
-TOTAL OF 2 LAYERS WITH 2 OZ. CU ON THE OUTER LAYERS
-FLAMMABILITY RATING: 94 V-0 MINIMUM.
- SIZE: CUT TO DIMENSIONS AND TOLERANCES SHOWN.
0.00" ARE PRIMARY DATUMS.
- DRILLING: -DRILL HOLES PER SCHEDULE. PLATE THROUGH HOLES WITH COPPER, 0.001" THICK MIN.
-ALL HOLE SIZES ARE SPECIFIED AFTER PLATING.
-HOLE LOCATION TOLERANCES ARE +/-0.003" IN RELATION TO CENTER
- FINISH: -SMOBC USING LPI BOTH SIDES, COLOR GREEN.
-GOLD IMMERSION BOTH SIDES.
-(LEAD FREE SOLDER CAN BE USED FOR PROTOTYPE)
-FOR SILKSREEN: BOTH SIDES USE WHITE NON-CONDUCTIVE INK.
- DO NOT ALTER ARTWORK e.g. TO ADD LOGO OR DATE CODE.
PAD SIZE CAN BE MODIFIED TO MEET END FINISH.
- PCBS ARE TO BE RoHS COMPLIANT.
- SCORING FOR PANELIZED PCB:

REVISION HISTORY

ECO	REV	DESCRIPTION	APPR	DATE
	2	PRODUCTION	JON M.	1-7-10



1630 MCCARTHY BLVD
MILPITAS, CA 95035
PH: (408)432-1800
LTC CONFIDENTIAL -
FOR CUSTOMER USE ONLY

TITLE: FABRICATION DRAWING

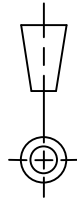
12-CELL BATTERY STACK MONITOR

SIZE	IC NO.	REV.
N/A	LTC6801IG	2
DEMO CIRCUIT 1469B		
FILENAME: DC1469B-2.PCB		SHT 1 of 1

APPROVALS

	INIT.	DATE
PCB DES.	K.L.	1-7-10
ENG.	JON M.	1-7-10

UNLESS OTHERWISE SPECIFIED
DIMENSIONS ARE IN INCHES
TOLERANCES ON ANGLE ±1°
0.XX" = ±0.01"
0.XXX" = ±0.005"
INTERPRET DIM AND TOL
PER ASME Y14.5M-1994
THIRD ANGLE PROJECTION



DO NOT SCALE DRAWING

SCALE: N/A